

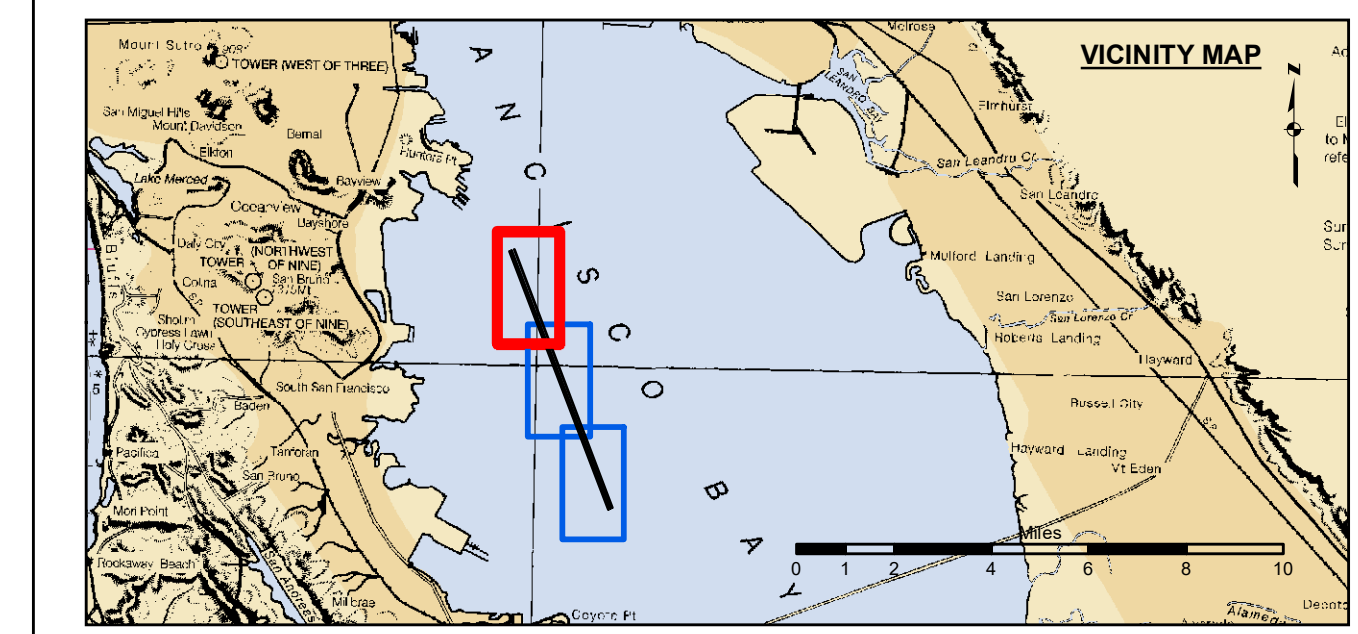
US Army Corps of Engineers
 San Francisco District
 1455 Market Street
 San Francisco, CA 94103

DISCLAIMER
 The United States Government furnishes this information for the general information of the recipient and does not warrant, express or implied, the accuracy, completeness, or reliability of the information and the data furnished. The United States shall be under no liability whatsoever to any person by reason of any use made hereof. These data belong to the Government. Therefore the recipient may not transfer these data to others without also transferring this Disclaimer.

Prepared Under the Direction of JOHN D. CUNNINGHAM LT COLONEL, C.E. DISTRICT ENGINEER	Chart Date: Mar 02, 2021
Submitted: Hydro Survey Team Leader	Designed by: PDT
Recommended: Chief, Hydro Survey Section	Plotted by: PDT
Approved: Chief, Construction Branch	Checked by: PDT
	Drawn by: PDT

CALIFORNIA
 SAN BRUNO SHOAL
 CONDITION SURVEY
 26 FEBRUARY 2021

Sheet
 Reference
 Number
1 of 3



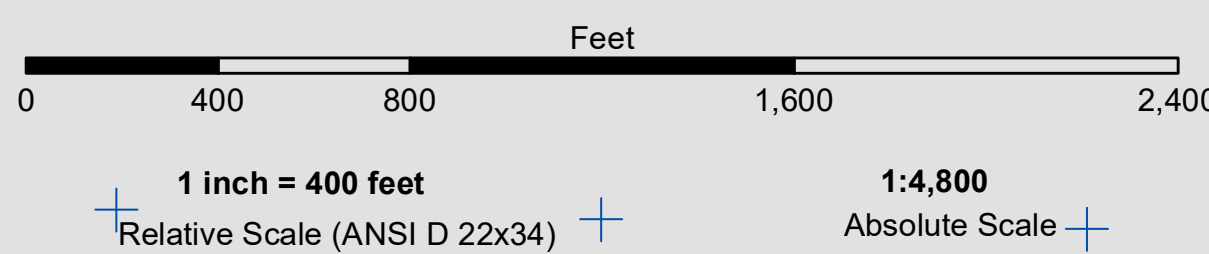
Federal Navigation Channel	Beacon, General	Contours
Shoaling Area	Obstruction Point	-30
Placement Area	Navigation Buoy	-29
Anchorage Area	Navigation Buoy	-28
Wreck Area	Shoalest Sounding*	-27
Submerged Wreck		-26
Angle Point		

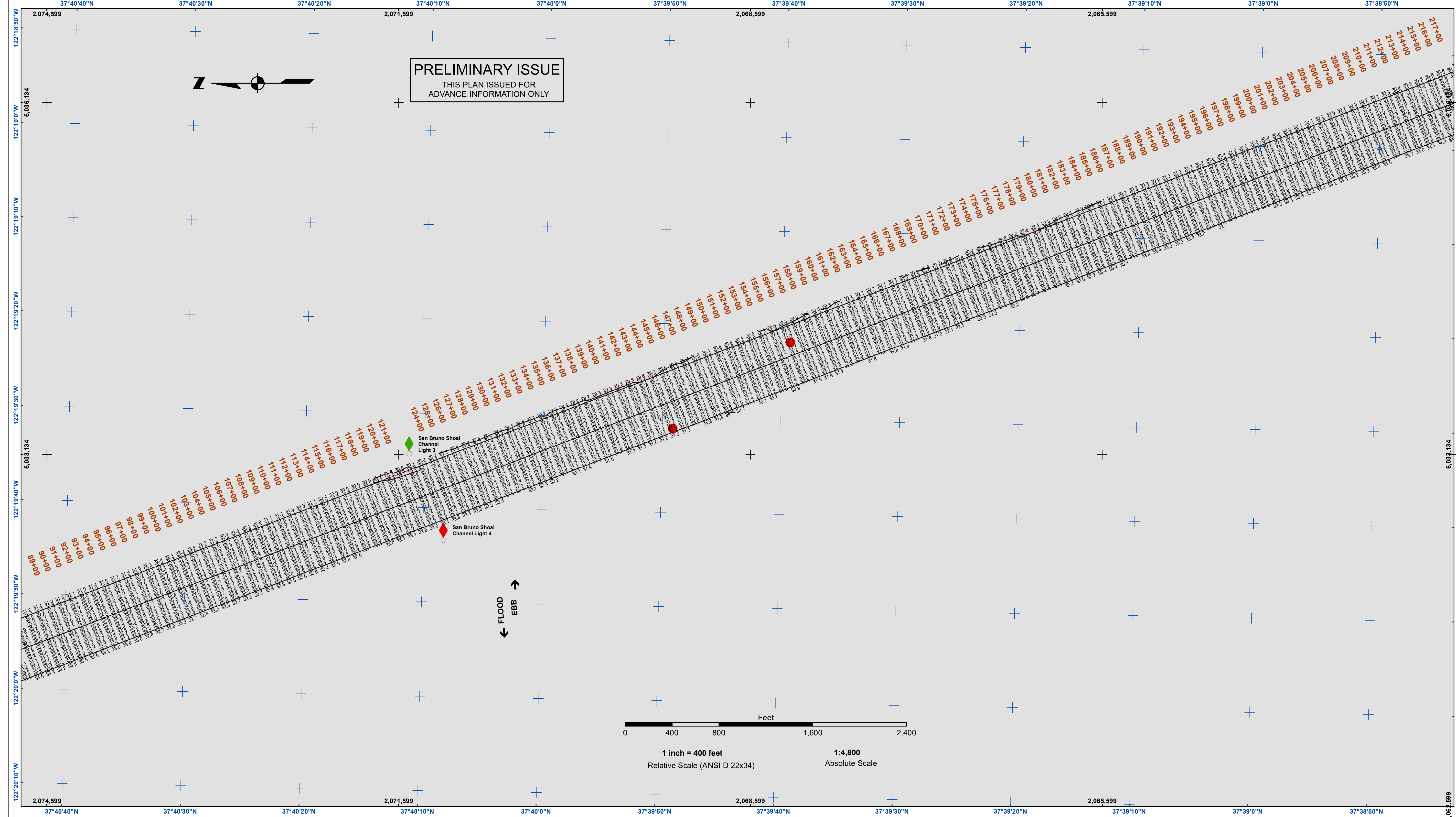
NOTES:
 DRAWING NOT TO BE USED FOR NAVIGATION. ONLY CHANNEL CONDITION AT DATE OF SURVEY.
 THE LOCATION OF ALL NAVIGATION AIDS ARE BASED ON INFORMATION PROVIDED BY THE U.S. COAST GUARD. BUOY LOCATIONS REPRESENT THE POSITION OF THE SINKER ONLY.
 INFORMATION DEPICTED ON THIS MAP REPRESENTS THE RESULTS OF SURVEYS MADE ON THE DATES INDICATED AND CAN ONLY BE CONSIDERED AS INDICATING THE GENERAL CONDITIONS AT THAT TIME.
 SURVEYED BY THE CORPS OF ENGINEERS.
 *SHOALEST SOUNDING PER QUARTER PER REACH

SOUNDINGS WERE TAKEN BY FATHOMETER AND ARE SHOWN TO THE NEAREST TENTH OF A FOOT.
 SOUNDINGS ARE BASED ON THE DATUM OF MEAN LOWER LOW WATER AT THE LOCALITY.
 PLANE GRID, BEARING AND COORDINATES ARE BASED ON THE STATE OF CALIFORNIA COORDINATE SYSTEM, LAMBERT CONFORMAL PROJECTION, ZONE III NAD 83, CALIFORNIA, AS DESCRIBED IN SPECIAL PUBLICATION NO. 253, PUBLISHED BY NATIONAL OCEAN SURVEY.
 THE PROJECT DEPTH IS 30 FEET AT M.L.L.W.
 CONTROL: SOUNDINGS ARE BASED ON THE TIDE GAUGE LOCATED AT THE HYDE STREET PIER, SAN FRANCISCO, CALIFORNIA.
 CONTROL:
 NOAA 941 4358
 BM 'S 1941': 15.74 FT MLLW
 HUNTERS POINT TIDE GAUGE: 13 FT MLLW
 NAIL AND BRASS WASHER (ORANGE RIBBON ATTACHED) ON PILING AT SE CORNER OF PIER 80
 NAIL LEVELED BY USACE ON 14 FEBRUARY 2016.
 HORIZONTAL COORDINATES: POST PROCESSED RTK FROM LOCAL REFERENCE STATIONS

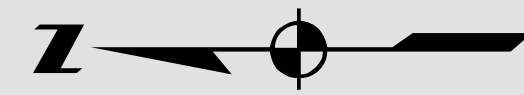
CENTERLINE ANGLE POINTS NAD 1983		
CENTERLINE ∠	EAST	NORTH
C1	6028432.2184	2082797.0402
C2	6039090.2184	2054839.0402

CHANNEL ANGLE POINTS NAD 1983		
CHANNEL ∠	EAST	NORTH
1	6028665.8184	2082886.0402
2	6039323.8184	2054933.0402
3	6038856.6184	2054749.9402
4	6028198.6184	2082707.9402

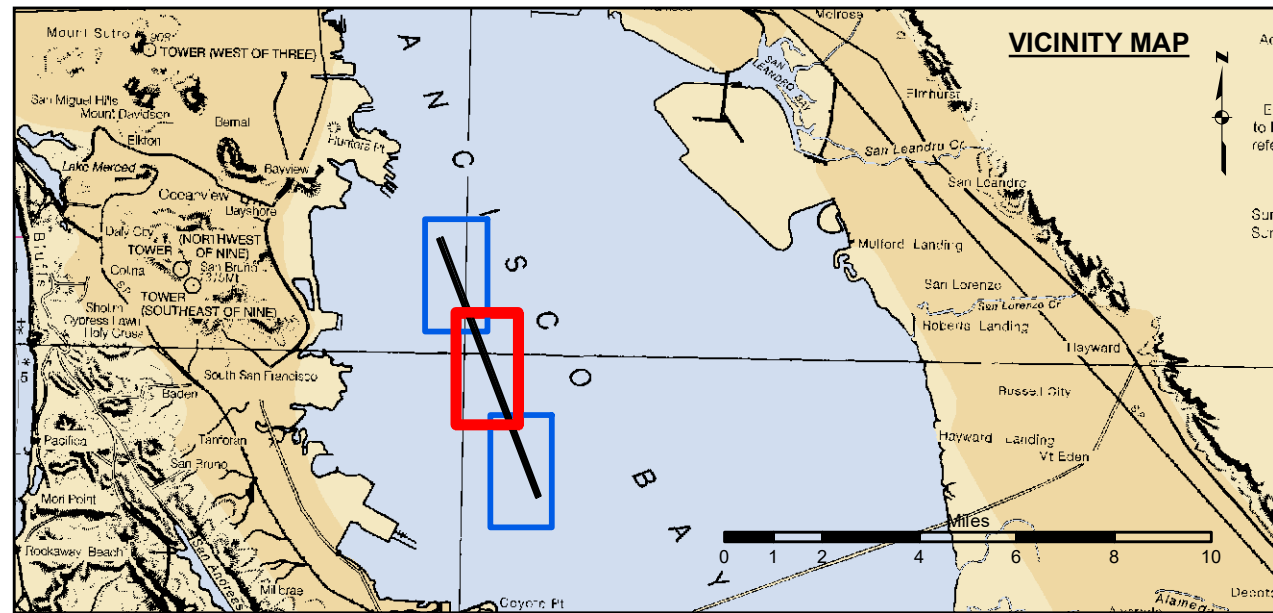
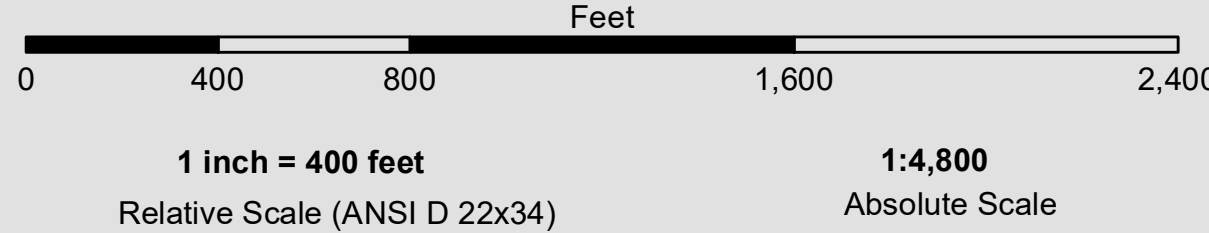




PRELIMINARY ISSUE
THIS PLAN ISSUED FOR
ADVANCE INFORMATION ONLY



← FLOOD
EBB →



- | | | |
|----------------------------|--------------------|-----------------|
| Federal Navigation Channel | Beacon, General | Contours |
| Shoaling Area | Obstruction Point | -30 |
| Placement Area | Navigation Buoy | -29 |
| Anchorage Area | Navigation Buoy | -28 |
| Wreck Area | Shoalest Sounding* | -27 |
| Submerged Wreck | | -26 |
| Angle Point | | |

NOTES:
DRAWING NOT TO BE USED FOR NAVIGATION. ONLY CHANNEL CONDITION AT DATE OF SURVEY.
THE LOCATION OF ALL NAVIGATION AIDS ARE BASED ON INFORMATION PROVIDED BY THE U.S. COAST GUARD. BUOY LOCATIONS REPRESENT THE POSITION OF THE SINKER ONLY.
INFORMATION DEPICTED ON THIS MAP REPRESENTS THE RESULTS OF SURVEYS MADE ON THE DATES INDICATED AND CAN ONLY BE CONSIDERED AS INDICATING THE GENERAL CONDITIONS AT THAT TIME.
SURVEYED BY THE CORPS OF ENGINEERS.
*SHOALEST SOUNDING PER QUARTER PER REACH

SOUNDINGS WERE TAKEN BY FATHOMETER AND ARE SHOWN TO THE NEAREST TENTH OF A FOOT.
SOUNDINGS ARE BASED ON THE DATUM OF MEAN LOWER LOW WATER AT THE LOCALITY.
PLANE GRID, BEARING AND COORDINATES ARE BASED ON THE STATE OF CALIFORNIA COORDINATE SYSTEM, LAMBERT CONFORMAL PROJECTION, ZONE III NAD 83, CALIFORNIA, AS DESCRIBED IN SPECIAL PUBLICATION NO. 253, PUBLISHED BY NATIONAL OCEAN SURVEY.
THE PROJECT DEPTH IS 30 FEET AT M.L.L.W.
CONTROL: SOUNDINGS ARE BASED ON THE TIDE GAUGE LOCATED AT THE HYDE STREET PIER, SAN FRANCISCO, CALIFORNIA.
CONTROL:
NOAA 941 4358
BM 'S 1941': 15.74 FT MLLW
HUNTERS POINT TIDE GAUGE: 13 FT MLLW
NAIL AND BRASS WASHER (ORANGE RIBBON ATTACHED) ON PILING AT SE CORNER OF PIER 80
NAIL LEVELED BY USACE ON 14 FEBRUARY 2016.
HORIZONTAL COORDINATES: POST PROCESSED RTK FROM LOCAL REFERENCE STATIONS

US Army Corps of Engineers
San Francisco District
1455 Market Street
San Francisco, CA 94103

DISCLAIMER: The United States Government makes no warranty, expressed or implied, concerning the accuracy, completeness, or reliability of the data furnished. The United States shall be under no liability whatsoever to any person by reason of any use made hereof. These data belong to the Government. Therefore the recipient may not transfer these data to others without also transferring this Disclaimer.

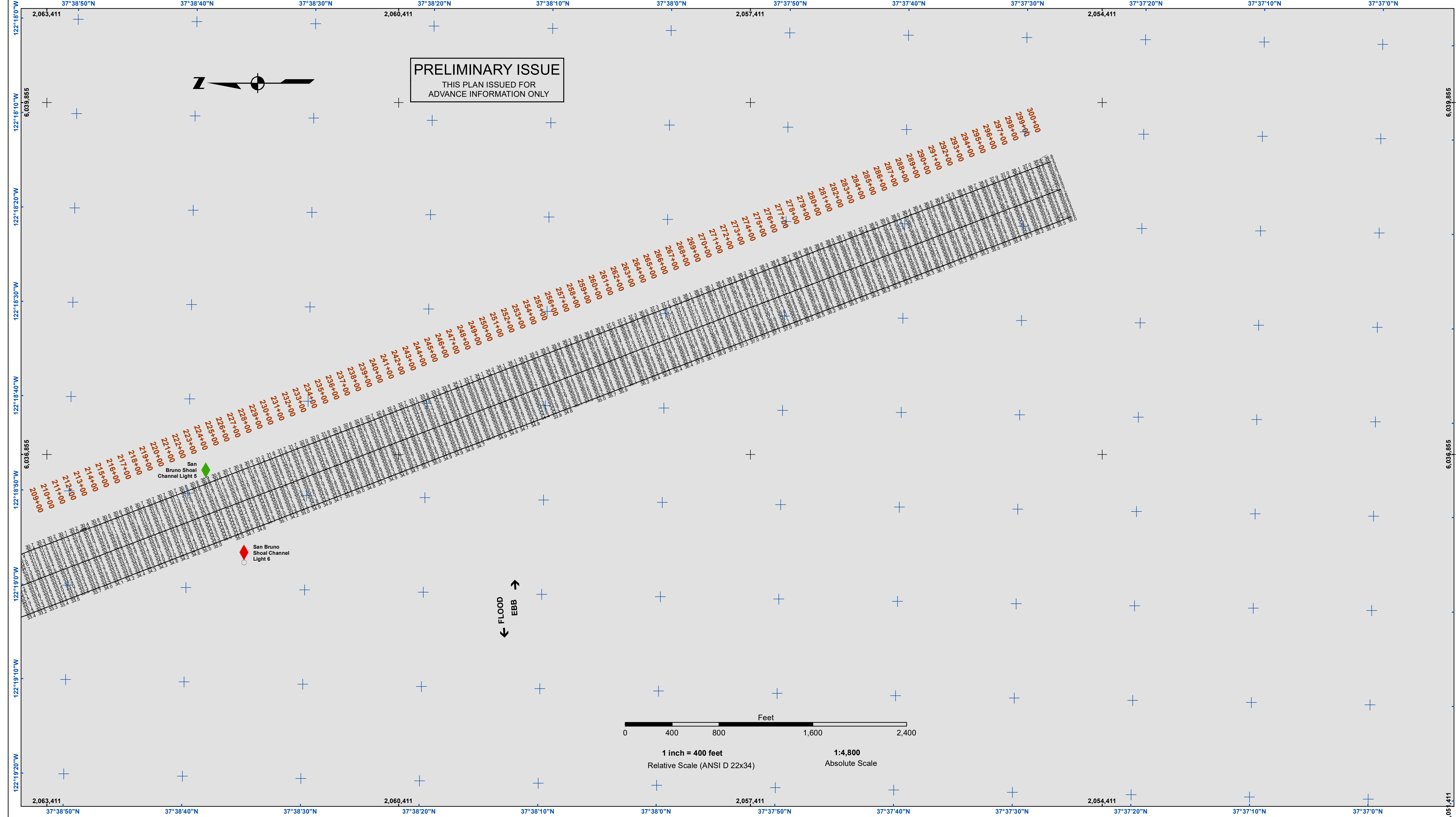
Access Constraints: The United States Government furnishes this information for use in the performance of its official duties. It is not to be distributed, reproduced, or disseminated, in any form, or by any means, without the prior written permission of the United States Government.

Distribution Liability: The data represents the results of data collection/processing for a specific US Army Corps of Engineers activity and indicates the general existing conditions. The user is responsible for the results of any application of the data for other than its intended purpose.

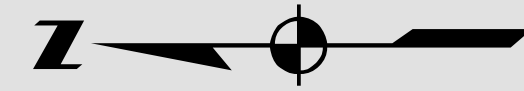
Prepared Under the Direction of JOHN D. CUNNINGHAM LT COLONEL, C.E., DISTRICT ENGINEER	Chart Date: Mar 02, 2021
Submitted: Hydro Survey Team Leader	Designed by: PDT
Recommended: Chief, Hydro Survey Section	Drawn by: PDT
Approved: Chief, Construction Branch	

CALIFORNIA
SAN BRUNO SHOAL
CONDITION SURVEY
26 FEBRUARY 2021

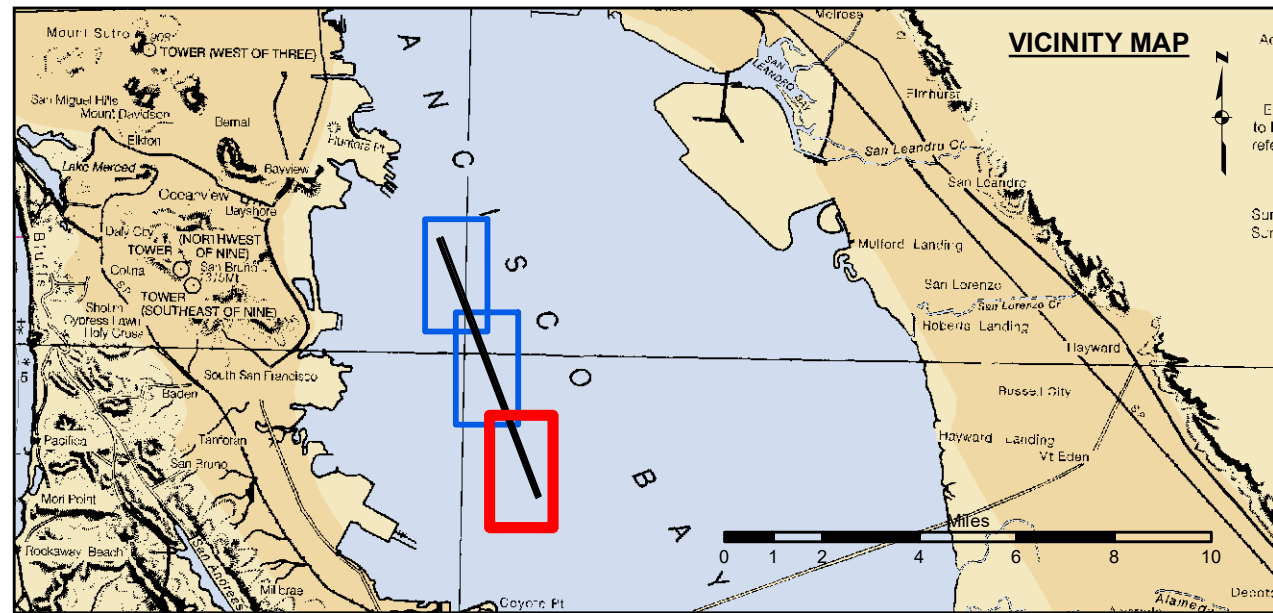
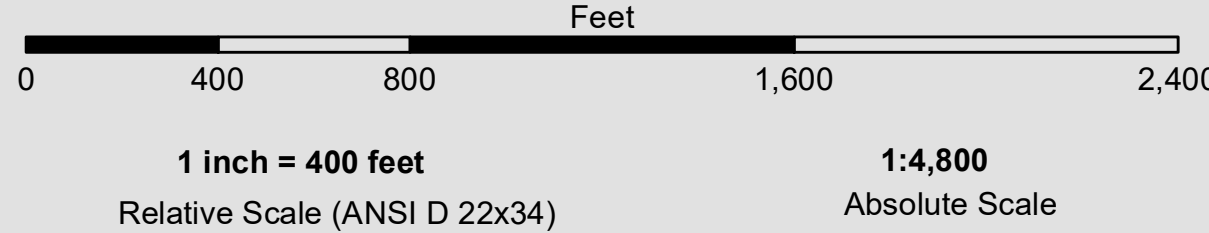
Sheet
Reference
Number
2 of 3



PRELIMINARY ISSUE
THIS PLAN ISSUED FOR
ADVANCE INFORMATION ONLY



← FLOOD
EBB →



- | | | |
|----------------------------|--------------------|-----------------|
| Federal Navigation Channel | Beacon, General | Contours |
| Shoaling Area | Obstruction Point | -30 |
| Placement Area | Navigation Buoy | -29 |
| Anchorage Area | Navigation Buoy | -28 |
| Wreck Area | Shoalest Sounding* | -27 |
| Submerged Wreck | | -26 |
| Angle Point | | |

NOTES:
DRAWING NOT TO BE USED FOR NAVIGATION. ONLY CHANNEL CONDITION AT DATE OF SURVEY.
THE LOCATION OF ALL NAVIGATION AIDS ARE BASED ON INFORMATION PROVIDED BY THE U.S. COAST GUARD. BUOY LOCATIONS REPRESENT THE POSITION OF THE SINKER ONLY.
INFORMATION DEPICTED ON THIS MAP REPRESENTS THE RESULTS OF SURVEYS MADE ON THE DATES INDICATED AND CAN ONLY BE CONSIDERED AS INDICATING THE GENERAL CONDITIONS AT THAT TIME.
SURVEYED BY THE CORPS OF ENGINEERS.
*SHOALEST SOUNDING PER QUARTER PER REACH

SOUNDINGS WERE TAKEN BY FATHOMETER AND ARE SHOWN TO THE NEAREST TENTH OF A FOOT.
SOUNDINGS ARE BASED ON THE DATUM OF MEAN LOWER LOW WATER AT THE LOCALITY.
PLANE GRID, BEARING AND COORDINATES ARE BASED ON THE STATE OF CALIFORNIA COORDINATE SYSTEM, LAMBERT CONFORMAL PROJECTION, ZONE III NAD 83, CALIFORNIA, AS DESCRIBED IN SPECIAL PUBLICATION NO. 253, PUBLISHED BY NATIONAL OCEAN SURVEY.
THE PROJECT DEPTH IS 30 FEET AT M.L.L.W.
CONTROL: SOUNDINGS ARE BASED ON THE TIDE GAUGE LOCATED AT THE HYDE STREET PIER, SAN FRANCISCO, CALIFORNIA.
CONTROL:
NOAA 941 4358
BM 'S 1941': 15.74 FT MLLW
HUNTERS POINT TIDE GAUGE: 13 FT MLLW
NAIL AND BRASS WASHER (ORANGE RIBBON ATTACHED) ON PILING AT SE CORNER OF PIER 80
NAIL LEVELED BY USACE ON 14 FEBRUARY 2016.
HORIZONTAL COORDINATES: POST PROCESSED RTK FROM LOCAL REFERENCE STATIONS

US Army Corps of Engineers
San Francisco District
1455 Market Street
San Francisco, CA 94103

DISCLAIMER
The United States Government furnishes this information for the general information of the user and does not warrant, express or implied, the accuracy, completeness, or reliability of the information and the data furnished. The United States shall be under no liability whatsoever to any person by reason of any use made thereof. These data belong to the Government. Therefore the recipient may not transfer these data to others without also transferring this Disclaimer.

Prepared Under the Direction of JOHN D. CUNNINGHAM LT COLONEL, C.E. DISTRICT ENGINEER	Chart Date: Mar 02, 2021
Submitted: Hydro Survey Team Leader	Designed by: PDT
Recommended: Chief, Hydro Survey Section	Drawn by: PDT
Approved: Chief, Construction Branch	

CALIFORNIA
SAN BRUNO SHOAL
CONDITION SURVEY
26 FEBRUARY 2021

Sheet Reference Number
3 of 3